

**Well Workplace Award
Executive Summary**

**McDowell Continuous
Care Center
Silver Award**

Information in this publication is carefully reviewed for accuracy. Questions, comments, or ideas are welcome. Please direct to Dr. David Hunnicutt, Executive Editor, at the address below.

Information may not be reproduced, copied, cited, or circulated in any printed or electronic form without written permission from the publisher. ©2002 Wellness Councils of America, 9802 Nicholas Street, Suite 315, Omaha, NE 68114; phone (402) 827-3590; fax (402)827-3594; visit our website at www.welcoa.org.

All rights reserved. Information contained in this document was accurate at the time the award was designated. Due to changing business environments information is subject to change without notification.



WELLNESS COUNCILS OF AMERICA

© 2003

General Information

WELL WORKPLACE

Silver Application

Name of Organization McDowell Continuous Care Center

Address of Organization P.O. Box 220, Route 103

Gary, WV 24836

Council Affiliation West Virginia Wellness Council

Contact Person David Walker

Title Wellness Coordinator

Work Telephone _____

Fax Number _____

E-Mail Address _____

Alternate Contact _____

Parent Organization AMFM, Inc.

Number of Sites Covered by this Application 1

No. of Employees Covered by this Application 112

Nature of Business or Industry Nursing Homes

Name of CEO John and Fonda Elliot

Date of Application May 30, 2003

ORGANIZATIONAL AND PROGRAM BACKGROUND

PREFACE: NARRATIVE

- ◆ McDowell Continuous Care Center is a 120 bed facility located on 2 floors that sits along Route 103, nestled in the rolling hills of southern WV. This wooded area provides an environment of vibrant colors from spring to fall, with beautiful winter settings.

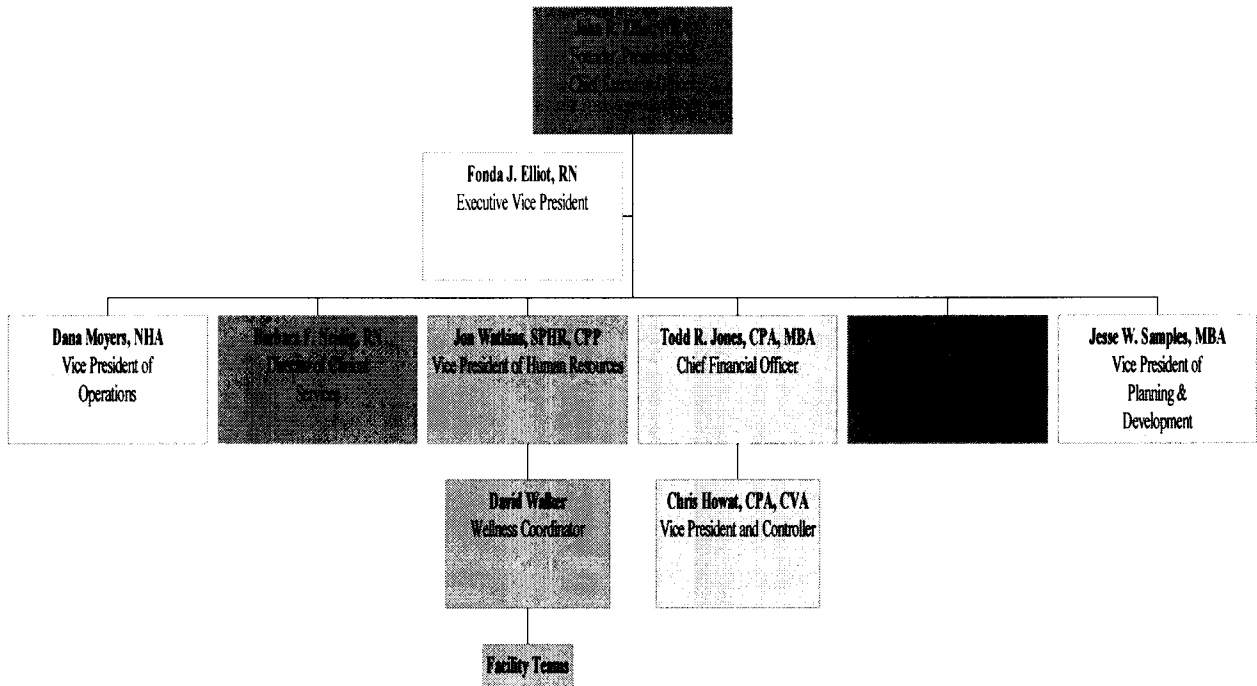
The facility has continued to advance with technology standards, and offers the most skilled care services available with all 120 beds being dually certified. We provide P.T., OT and speech therapy, along with respite care. The facility is owned by AMFM, Inc. Of Charleston, West Virginia, a private corporation owned by John and Fonda Elliot. Mr. John Elliot serves as CEO of the company. We currently employ 112.

- ◆ AMFM has been involved in wellness programming for several years starting with a Well Workplace seminar in 1997 for all facilities. Fonda Elliot saw the need for wellness programming for all employee's with her nursing career. In 2002, with the help of Lew Holloway and the Wellness Council of West Virginia, a mini well workplace review meeting with representatives from each of their facilities was held to re-energize and re-organized wellness programs at each of the local facilities. The Elliot's take an active interest in the health and well being of their employees not only financially but also by participating in all activities.

- ◆ AMFM's vision is to enhance the corporate philosophy that holds the employee's health and well being at a high standard. The mission or purpose of the wellness program closely parallels the corporate mission statement. The mission of the wellness program is "To enhance and support personal growth in our employees' well-being by providing an environment which offers opportunities to increase awareness, provide education, and encourage individual commitment to a healthier lifestyle."

- ◆ AMFM Wellness falls into the Human Resources Department of our Organization.

AMFM, INC. Organizational Chart



◆ We began by taking the Seven C's model from the seminar and implementing it into our program. As stated earlier, we have strong senior leadership from John and Fonda Elliot. They participate in all activities and support all facilities with a wellness budget of \$100 monthly. The facilities have created Wellness Teams with people from all departments. Utilizing co chairs to share the leadership responsibilities. We have been collecting data through an assessment of employees health needs surveys; health risk appraisals, workers comp claims; injury rates; Medben utilization updates; health screens; yearly physicals; and programs in which they desired to participate. We have also looked at our Workers Compensation system over the last 10 months and constructed plans for it as well. We are formulating data on our health check-ups too. We have used these assessments to formulate an Operating plan and calender with a schedule of events to meet our employees needs. We are committed to utilize resources on appropriate programs and target our needs. All facilities are encouraged to participate in friendly competition against other facilities and within departments also. Our Human Resources Department has just restructured our benefits package to include better vision, dental, and flex spending programs as well as upgrading the 401k options. The Wellness Coordinator is constantly evaluating the outcomes of the Workers Compensation, Injury rates, return to work program, blood pressure , walking, weight loss, stop smoking and all other programs for effectiveness and improvements. These are done in the team wellness meetings and at the Corporate Team meetings as well. We have devoted bulletin boards, Quality Awards, newsletters, in services , paycheck stuffers, prizes and awards for the communications related to wellness. As our program has evolved we have determined

that our goals and focus are very similar to the objectives of the safety committee thus some of our programs have become a joint effort. There has been a cooperative effort to reduce the number of work-related injuries. The overall goal of the wellness committee is to encourage our employees and their families to adopt a wellness lifestyle that includes all aspects of their lives -- spiritual, physical, and emotional well being. Some of our objectives toward the overall goal include:

1. Providing programs that will enhance growth in the mind, body, and spirit.
2. Educating employees concerning a holistic approach to wellness.
3. Being supportive of employees efforts toward wellness.
4. Promoting facility-wide team spiritedness in our approach to wellness.
5. Providing a safe environment to work in and providing quality standards.
6. Evaluation of success/failures of individual programs.

◆ The individual who has had the most impact on our wellness program is Fonda Elliot. She continues to assure that even in challenging economic times the corporation continues to financially support its wellness initiative. As each new program is introduced whether it is a return to work, ergonomics, walking, seatbelt safety, mammograms, flu vaccines etc., Mrs. Elliot writes a memo or letter of support for the program. She also states that “ We are doing the Wellness programs because it is the right thing to do”. At our last Corporate meeting she stated that she “would like to see all facilities at the gold level”.

- ◆ Our program has some unique strengths, but the greatest one is our continued support from the ownership and their ability to provide leadership. We would not be able to do any of our programs without their commitment and drive to provide all AMFM INC. employees with a safe, friendly and supportive work environment. They continually look for ways to provide a better place to work and create a team atmosphere among the workers. They see the wellness program as increasing employee morale, lowering absenteeism, and providing stability in the communities. A second unique strength to our program is the team approach that we are able to use with the Wellness Coordinator, facility co chairs and teams, Home Office Corporate Team, Executive directors, owners and West Virginia Wellness Council. Our Wellness Coordinator is able to accumulate data, utilize resources in the communities, analyze and create ideas for programs. He has been able to attend facility meetings and set up proper agendas, communication pieces, and overall goals for the individual facilities. The facility co chairs are the leaders of the facility programs with their inspiration and commitment to their fellow employees. Each facility also has team members who show a willingness to help in anyway they can for support. All of the members of the facility teams do this above and beyond their regular jobs. The Corporate Team oversees all functions and OK's budgets, programs, evaluations and provides input to grow the individual programs. The Wellness Council of West Virginia is also a great source of strength with their constant support, ideas and direction. The Well Workplace module has been our guiding light since its inception and continues to drive the program today. We consider all these to be part of the team that drives the AMFM

Wellness Initiative.

The third strength that the wellness initiative offers is all the programs are free of charge to the employee. Most employees really see this as a great benefit to them as well as their medical, health benefits package, etc.. It is great to see or hear from the employees that have made changes in their lifestyle from one of our programs or diagnosis's provided.

- ◆ Some of the most popular programs within our wellness program are the Health Fair, Blood Pressure challenge, Seatbelt safety, free flu vaccinations, mammograms and the walking program. Our facility loves to compete with the other facilities at AMFM Inc. We have been the top fundraiser for the last three years for the Alzheimer Walk.

- ◆ We take great pride in our community and our role as a health care provider and largest employer in our town. We provide a lot of benefits for the people that would not ordinarily have health care insurance much less a wellness program. Our Executive Director plays a key role in the facilitation of our program and always participates to set a good example. Our bowling program has really taken off and been a family participation program that has brought great joy and morale boost to our staff.