

**Well Workplace Award
Executive Summary**

Summers Continuous Care Center Silver Award

Information in this publication is carefully reviewed for accuracy. Questions, comments, or ideas are welcome. Please direct to Dr. David Hunnicutt, Executive Editor, at the address below.

Information may not be reproduced, copied, cited, or circulated in any printed or electronic form without written permission from the publisher. ©2002 Wellness Councils of America, 9802 Nicholas Street, Suite 315, Omaha, NE 68114; phone (402) 827-3590; fax (402)827-3594; visit our website at www.welcoa.org.

All rights reserved. Information contained in this document was accurate at the time the award was designated. Due to changing business environments information is subject to change without notification.



WELLNESS COUNCILS OF AMERICA

© 2003

General Information

WELL WORKPLACE
Silver Application

Name of Organization Summers Continuous Care Center

Address of Organization _____

Hinton, WV

Council Affiliation West Virginia Wellness Council

Contact Person David Walker

Title Wellness Coordinator

Work Telephone _____

Fax Number _____

E-Mail Address _____

Alternate Contact _____

Parent Organization AMFM, Inc.

Number of Sites Covered by this Application 1

No. of Employees Covered by this Application 114

Nature of Business or Industry Nursing Homes

Name of CEO John and Fonda Elliot

Date of Application May 30, 2003

ORGANIZATIONAL AND PROGRAM BACKGROUND

PREFACE: NARRATIVE

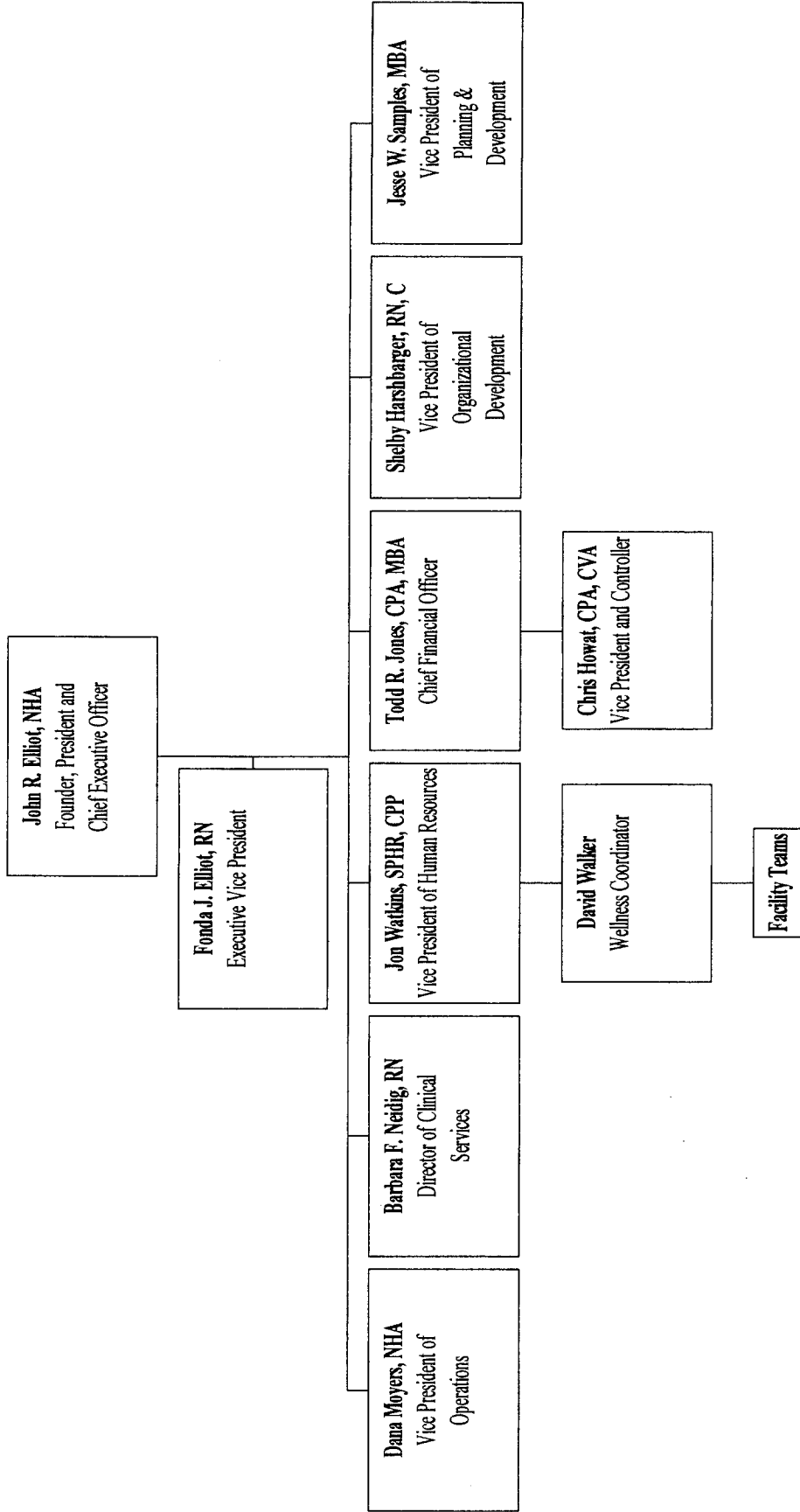
- ◆ Our facility is a 120 bed, single story, Skilled Nursing home located in the rural community of Hilldale, West Virginia near Hinton in Summers County. Our facility provides 24 hour skilled nursing services, Physical Therapy, Occupational Therapy, and Speech Language Pathology services. The facility employs 114 full time and part time employees. There are three R.N.s with 4 year degrees, two Social Workers with four year degrees, and a Business Office Manager with a four year degree in Business. The Administrator has a Bachelor of Science degree in Business and is currently licensed as a NHA in two fields.

- ◆ AMFM has been involved in wellness programming for several years starting with a Well Workplace seminar in 1997 for all facilities. Fonda Elliot saw the need for wellness programming for all employee's with her nursing career. In 2002, with the help of Lew Holloway and the Wellness Council of West Virginia, a mini well workplace review meeting with representatives from each of their facilities was held to re-energize and re-organized wellness programs at each of the local facilities. The Elliot's take an active interest in the health and well being of their employees not only financially but also by participating in all activities.

- ◆ AMFM's vision is to enhance the corporate philosophy that holds the employee's health and well being at a high standard. The mission or purpose of the wellness program closely parallels the corporate mission statement. The mission of the wellness program is "To enhance and support personal growth in our employees' well-being by providing an environment which offers opportunities to increase awareness, provide education, and encourage individual commitment to a healthier lifestyle."

- ◆ AMFM Wellness falls into the Human Resources Department of our Organization.(see attached organizational chart)

AMFM, INC. Organizational Chart



◆ We began by taking the Seven C's model from the seminar and implementing it into our program. As stated earlier, we have strong senior leadership from John and Fonda Elliot. They participate in all activities and support all facilities with a wellness budget of \$100 monthly. The facilities have created Wellness Teams with people from all departments. Utilizing co chairs to share the leadership responsibilities. We have been collecting data through an assessment of employees health needs surveys; health risk appraisals, workers comp claims; injury rates; Medben utilization updates; health screens; yearly physicals; and programs in which they desired to participate. We have also looked at our Workers Compensation system over the last 10 months and constructed plans for it as well. We are formulating data on our health check-ups too. We have used these assessments to formulate an Operating plan and calender with a schedule of events to meet our employees needs. We are committed to utilize resources on appropriate programs and target our needs. All facilities are encouraged to participate in friendly competition against other facilities and within departments also. Our Human Resources Department has just restructured our benefits package to include better vision, dental, and flex spending programs as well as upgrading the 401k options. The Wellness Coordinator is constantly evaluating the outcomes of the Workers Compensation, Injury rates, return to work program, blood pressure , walking, weight loss, stop smoking and all other programs for effectiveness and improvements. These are done in the team wellness meetings and at the Corporate Team meetings as well. We have devoted bulletin boards, Quality Awards, newsletters, in services , paycheck stuffers, prizes and awards for the communications related to wellness. As our program has evolved we have determined that our goals and focus are very similar to the objectives of the safety committee thus

some of our programs have become a joint effort. There has been a cooperative effort to reduce the number of work-related injuries. The overall goal of the wellness committee is to encourage our employees and their families to adopt a wellness lifestyle that includes all aspects of their lives -- spiritual, physical, and emotional well being. Some of our objectives toward the overall goal include:

1. Providing programs that will enhance growth in the mind, body, and spirit.
2. Educating employees concerning a holistic approach to wellness.
3. Being supportive of employees efforts toward wellness.
4. Promoting facility-wide team spiritedness in our approach to wellness.
5. Providing a safe environment to work in and providing quality standards.
6. Evaluation of success/failures of individual programs.

◆ The individual who has had the most impact on our wellness program is Fonda Elliot. She continues to assure that even in challenging economic times the corporation continues to financially support its wellness initiative. As each new program is introduced whether it is a return to work, ergonomics, walking, seatbelt safety, mammograms, flu vaccines etc., Mrs. Elliot writes a memo or letter of support for the program. She also states that “ We are doing the Wellness programs because it is the right thing to do”. At our last Corporate meeting she stated that she “would like to see all facilities at the gold level”.

- ◆ Our program has some unique strengths, but the greatest one is our continued support from the ownership and their ability to provide leadership. We would not be able to do any of our programs without their commitment and drive to provide all AMFM INC. employees with a safe, friendly and supportive work environment. They continually look for ways to provide a better place to work and create a team atmosphere among the workers. They see the wellness program as increasing employee morale, lowering absenteeism, and providing stability in the communities. A second unique strength to our program is the team approach that we are able to use with the Wellness Coordinator, facility co chairs and teams, Home Office Corporate Team, Executive directors, owners and West Virginia Wellness Council. Our Wellness Coordinator is able to accumulate data, utilize resources in the communities, analyze and create ideas for programs. He has been able to attend facility meetings and set up proper agendas, communication pieces, and overall goals for the individual facilities. The facility co chairs are the leaders of the facility programs with their inspiration and commitment to their fellow employees. Each facility also has team members who show a willingness to help in anyway they can for support. All of the members of the facility teams do this above and beyond their regular jobs. The Corporate Team oversees all functions and OK's budgets, programs, evaluations and provides input to grow the individual programs. The Wellness Council of West Virginia is also a great source of strength with their constant support, ideas and direction. The Well Workplace module has been our guiding light since its inception and continues to drive the program today. We consider all these to be part of the team that drives the AMFM

Wellness Initiative.

The third strength that the wellness initiative offers is all the programs are free of charge to the employee. Most employees really see this as a great benefit to them as well as their medical, health benefits package, etc.. It is great to see or hear from the employees that have made changes in their lifestyle from one of our programs or diagnosis's provided.

- ◆ Some of the most popular programs within our wellness program are the Health Fair, Blood Pressure challenge, Seatbelt safety, free flu vaccinations, mammograms and the walking program. Our facility loves to compete with the other facilities at AMFM Inc.
- ◆ Some of the most popular programs within our wellness program are the free flu vaccinations, mammograms, Alzheimer's Walk, walking and the weight loss program. These are programs that we have been able to continue through the years with success. We are also happy with our blood pressure challenge and safety educational programs too.
- ◆ During our wellness programs this year we have had fifty two people received their flu vaccine this year. Twenty one female employees received their annual mammogram and a total of fifteen people participated in the weight loss program. A total of 25 pounds was lost during our program. We had 49 percent of our employees to participate in the blood pressure challenge, the challenge resulted in 5 employees referred to their doctor. 48 flu shots were given during flu season which is 41 percent of our staff. 56 percent of our staff wore seatbelts in the annual

seatbelt check. In the month of October, the facility participates in the annual Alzheimer's Walk. We also had a Bowling day for families and workers.