

20
24

THE WELLNESS COUNCIL OF AMERICA PRESENTS

THE WELCOA FACULTY

Updated February 2024

WELCOA*

ABOUT THE WELCOA FACULTY

OUT OF
5,000
TRAINED IN

THE WELCOA INSTITUTE
FOR WELLNESS STUDIES



174

**BEST TRAINED
CERTIFIED WELCOA
FACULTY**

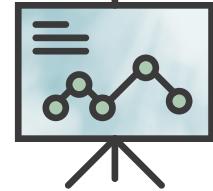
WHO
EARN



4

CERTIFICATIONS

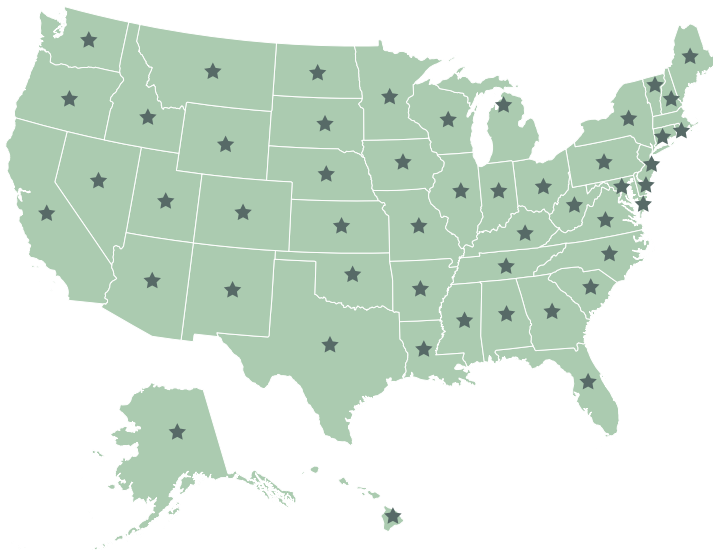
WHICH
RESULTS
IN



MORE
THAN **24**

**HOURS
OF TRAINING**

CERTIFIED WELCOA FACULTY LIVE IN...



50
STATES

AND

5
COUNTRIES

TRAINING CURRICULUM

- ✓ WELLNESS PROGRAM STRATEGY
- ✓ LATEST BEST PRACTICES FOR RESULTS-ORIENTED WELLNESS PROGRAMS
- ✓ PROGRAM EVALUATION
- ✓ MOTIVATION & BEHAVIORAL THEORY
- ✓ EMPLOYEE ENGAGEMENT
- ✓ LEADERSHIP AND PROGRAM MANAGEMENT SKILLS
- ✓ EMPLOYEE ENGAGEMENT
- ✓ MORE TOPICS ADDED MONTHLY

REQUIREMENTS



WELCOA CERTIFIED

Completion of one Certification Series (approximately 6 hours of online training).



WELCOA FACULTY CERTIFIED

Completion of four Certification Series. Faculty must complete at least one additional Certification every two years and be an active WELCOA Member in good standing to maintain Certified Faculty Status.

GET STARTED ON YOUR WELCOA FACULTY CERTIFICATION

Drawing from the latest science as well as best practices in the field, WELCOA offers dynamic and nationally recognized webinars and certification opportunities that engage workplace wellness practitioners, business leaders and health professionals all across the country.

LEARN MORE
institute.welcoa.org



THE COMPLETE LIST OF WELCOA FACULTY

| NAME | ORGANIZATION | STATE | PROFILE |
|----------------------|--|-------|---|
| Toni Armbruster | Husch Blackwell LLP | MO | http://institute.welcoa.org/profile/toniarmbruster |
| Jennifer Artman | HealthSource Solutions | IL | http://institute.welcoa.org/profile/jenniferartman |
| Katie Atkinson | Security National Life Insurance Company | | http://institute.welcoa.org/profile/katieatkinson |
| Meredith Baciak | Miron Construction Co., Inc | WI | http://institute.welcoa.org/profile/meredithbaciak |
| Kim Baker | Northern Kentucky University | KY | http://institute.welcoa.org/profile/kimbaker |
| Kelii Bandmann | UHA | HI | http://institute.welcoa.org/profile/keliibandmann |
| Sheila Bannister | Independent Contractor | RI | http://institute.welcoa.org/profile/sheilabannister |
| Jennifer Barroll | Kaiser Permanente Healthworks | CA | http://institute.welcoa.org/profile/jenniferbarroll |
| Rachel Beck | Arapahoe County | CO | http://institute.welcoa.org/profile/rachelbeck2 |
| Jenni Beekman | Dean Health Plan | WI | http://institute.welcoa.org/profile/jennibeekman |
| Maddison Bezdicek | Captive Resources, LLC | IL | http://institute.welcoa.org/profile/maddisonbezdicek |
| Bonnie Bishop | Samaritan Health Services | OR | http://institute.welcoa.org/profile/bonniebishop |
| Jennessa Bissonnette | CGI Business Solutions | NH | http://institute.welcoa.org/profile/jennessab |
| Maricel Blackwell | HMSA | HI | http://institute.welcoa.org/profile/maricelblackwell2 |
| Melissa Blanco | Kaiser Permanente Healthworks | CA | http://institute.welcoa.org/profile/melissablanco |
| McKenzi Blanton | McGriff Insurance Services Irvine | CA | http://institute.welcoa.org/profile/mkenziblanton |
| Kelley Bock | Froedtert Health Inc | WI | http://institute.welcoa.org/profile/kelleybock |
| Chrissy Boe | Network Health | WI | http://institute.welcoa.org/profile/christineboe |
| Christy Brooks | Kaiser Permanente Healthworks | MD | http://institute.welcoa.org/profile/christybrooks |
| Bethany Bullard | Johnson Kendall Johnson | PA | http://institute.welcoa.org/profile/bethanybullard |
| Angela Cameranesi | Froedtert Health Inc | WI | http://institute.welcoa.org/profile/angelacameranesi |
| Natalie Cannady | UAMS LR | AR | http://institute.welcoa.org/profile/nataliecannady |
| Nikki Capelle | Woodman's Food Market, Inc. | WI | http://institute.welcoa.org/profile/nikkicapelle |
| Marti Carl | McGriff Insurance Services Irvine | CA | http://institute.welcoa.org/profile/marticalr |
| Michele Carpenter | Kaiser Permanente Healthworks | CA | http://institute.welcoa.org/profile/michelecarpenter |
| Sandi Carter | Ertel & Company, Inc. | IN | http://institute.welcoa.org/profile/sandicarter |
| Nicole Carter | Kaiser Permanente Healthworks | CA | http://institute.welcoa.org/profile/nicolecarter |
| Jennifer Castillo | Kaiser Permanente Healthworks | CA | http://institute.welcoa.org/profile/jennifercastillo |
| Michelle Cella | Marcum LLP | NY | http://institute.welcoa.org/profile/michellecella |
| Kathy Chambers | Dean Health Plan | WI | http://institute.welcoa.org/profile/kathychambers |
| Robert Chapman | HealthSource Solutions | MN | http://institute.welcoa.org/profile/robertchapman |
| Stephanie Conner | CBIZ Benefits and Insurance Services | MO | http://institute.welcoa.org/profile/stephanieconner |
| Adam Cox | McGriff Insurance Services Irvine | CA | http://institute.welcoa.org/profile/adamcox |
| Carrie Crowe | BKS Partners | TN | http://institute.welcoa.org/profile/carriecrowe |

THE COMPLETE LIST OF WELCOA FACULTY

| NAME | ORGANIZATION | STATE | PROFILE |
|--------------------|---|-------|---|
| Anne Curtis | Aurora Health Care | WI | http://institute.welcoa.org/profile/annecurtis |
| Amanda Davis | | AL | http://institute.welcoa.org/profile/amandadavis2 |
| Valerie Davison | UHA | HI | http://institute.welcoa.org/profile/valeriedavison |
| Kristina Docwra | | TX | http://institute.welcoa.org/profile/kristinadocwra2 |
| Jessica Domann | Phillips 66 | TX | http://institute.welcoa.org/profile/jessicadomann |
| Lisa Drzyzga | Univera Healthcare | NY | http://institute.welcoa.org/profile/lisadrzyzga |
| Linda Duffy | Broward County Benefits | FL | http://institute.welcoa.org/profile/lindaduffy |
| Jenny Edwards | Government Employees Health Association, Inc. | KS | http://institute.welcoa.org/profile/jedunn |
| Carly Fassbender | Froedtert Health Inc | WI | http://institute.welcoa.org/profile/carlyfassbender |
| Crystal Felten | Metropolitan Council | MN | http://institute.welcoa.org/profile/crystalfelten |
| Stacey Fickau | Froedtert Health Inc | WI | http://institute.welcoa.org/profile/staceyfickau |
| Megan Fortnoff | | OH | http://institute.welcoa.org/profile/meganfortnoff |
| Jaqueline Fuccillo | Premise Health | NJ | http://institute.welcoa.org/profile/jaquelinefuccillo2 |
| Tracy Gallo | BCBSFL | FL | http://institute.welcoa.org/profile/tracygallo3 |
| Jesse Gavin | JG Key Services, LLC | TX | http://institute.welcoa.org/profile/jessegavin |
| Elle Gbesemete | EPIC Brokers | CA | http://institute.welcoa.org/profile/ellegbesemete |
| Brandee Gerow | SAIF | OR | http://institute.welcoa.org/profile/brandeegerow |
| Jody Gilmyers | CISAA Insurance Group | CA | http://institute.welcoa.org/profile/jodygilmyers |
| Jana Goolsby | City of Olathe | KS | http://institute.welcoa.org/profile/janagoolsby |
| Mary Green | Woodruff Sawyer & Co | OR | http://institute.welcoa.org/profile/marygreen |
| Sharon Griffin | The Solutions Group | AZ | http://institute.welcoa.org/profile/sharongriffin |
| Vicki Griffis Roy | Hylant | FL | http://institute.welcoa.org/profile/vickigriffisroy |
| Kalen Gruber | McGriff Insurance Services Irvine | CA | http://institute.welcoa.org/profile/kalengruber |
| Kathy Grywusiewicz | City Of Odessa | TX | http://institute.welcoa.org/profile/kathygrywusiewicz |
| Tracie Guild | Red Stone Equity Partners | MI | http://institute.welcoa.org/profile/tracieguild |
| Chantal Gutierrez | Kaiser Permanente Healthworks | MD | http://institute.welcoa.org/profile/chantalgutierrez |
| Martha Hagmaier | Electronic Arts | CA | http://institute.welcoa.org/profile/marthahagmaier |
| Sharon Hailey | City of Germantown | TN | http://institute.welcoa.org/profile/sharonhailey |
| Armand Hamberlin | CHC Wellbeing | IL | http://institute.welcoa.org/profile/armandhamberlin |
| Dawn Hedlund | LifeCare Medical Center | MN | http://institute.welcoa.org/profile/dawnhedlund |
| Heidi Helsley | Washington State Health Care Authority | WA | http://institute.welcoa.org/profile/heidihelsley |
| Kara Hepp | | MO | http://institute.welcoa.org/profile/karahepp2 |
| Jane Herbert | The Solutions Group | NM | http://institute.welcoa.org/profile/janeherbert |
| Kelly Herrin | | WI | http://institute.welcoa.org/profile/kellyherrin |

THE COMPLETE LIST OF WELCOA FACULTY

| NAME | ORGANIZATION | STATE | PROFILE |
|--------------------|--|-------|---|
| Aaron Huff | Washington State Health Care Authority | WA | http://institute.welcoa.org/profile/aaronhuff |
| Heather Hughes | Premise Health | TN | http://institute.welcoa.org/profile/heatherhughes |
| Michele Hunnicutt | Harris Health System | TX | http://institute.welcoa.org/profile/michelehunnicutt |
| Daniela Imbimbo | City Furniture | FL | http://institute.welcoa.org/profile/danielaimbimbo |
| Taylor Ingersoll | Johnston County Human Resources | NC | http://institute.welcoa.org/profile/tayloringersoll |
| Trish Isaak | Davidson Benefits Planning | OR | http://institute.welcoa.org/profile/trishisaak |
| Brianne Jackson | Kaiser Permanente Healthworks | CA | http://institute.welcoa.org/profile/briannejackson2 |
| Tia Jeppsen | Samaritan Health Services, Inc. | OR | http://institute.welcoa.org/profile/tiajeppsen |
| Raeanna Johnson | Weber State University | UT | http://institute.welcoa.org/profile/raeannajohnson |
| Stephanie Jones | Arkansas Blue Cross and Blue Shield | AR | http://institute.welcoa.org/profile/stephaniejones2 |
| Robert Julius | Perryman Company | PA | http://institute.welcoa.org/profile/robertjulius |
| Laurell Kaiser | Skills Inc. | WA | http://institute.welcoa.org/profile/laurellkaiser |
| Kelle Kampa | Kelsey Seybold | TX | http://institute.welcoa.org/profile/kellekampa2 |
| Lauren Kanikeberg | Trimble | OR | http://institute.welcoa.org/profile/laurenkanikeberg |
| Carly Kleiman | Hylant | FL | http://institute.welcoa.org/profile/carlykleiman |
| Emily Kral | Hylant | OH | http://institute.welcoa.org/profile/emilykrall |
| Alyssa Kwasny | Faith Technologies, Inc. | WI | http://institute.welcoa.org/profile/alyssakwasny |
| Edwina Larson | Goodwill Industries of Southeastern Wisconsin Inc | WI | http://institute.welcoa.org/profile/edwinalarson |
| Francy Leal | North East ISD | TX | http://institute.welcoa.org/profile/francyleal2 |
| Charlene Learner | Huntsville Hospital | AL | http://institute.welcoa.org/profile/charlenelearner |
| Kim Lepera | Husch Blackwell | WI | http://institute.welcoa.org/profile/kimlepera |
| Carol Li | Kaiser Permanente Healthworks | CA | http://institute.welcoa.org/profile/carolli |
| Kristen Lippencott | Arkansas Blue Cross and Blue Shield | AR | http://institute.welcoa.org/profile/kristenlippencott |
| Kayla Livesay | State of Tennessee - Department of Finance & Admin | TN | http://institute.welcoa.org/profile/kaylalivesay |
| Sharon Looney | | | http://institute.welcoa.org/profile/sharonlooney |
| Adriana Lopez | The Solutions Group | AZ | http://institute.welcoa.org/profile/adrianalopez |
| Ruth LoRegio | Aetna - MidAtlantic National Accounts | PA | http://institute.welcoa.org/profile/ruthloregio |
| Carolyn MacVicar | University of Alabama - Wellness and Work-Life | AL | http://institute.welcoa.org/profile/carolynmacvicar |
| Jen Marberry | The Solutions Group | NM | http://institute.welcoa.org/profile/jenmarberry |
| Melissa Marion | High Point University | NC | http://institute.welcoa.org/profile/melissamarion |
| Christine Maurer | StoneX | MO | http://institute.welcoa.org/profile/christinemaurer |
| Tammie McCoy | CBIZ Benefits and Insurance Services | KS | http://institute.welcoa.org/profile/tammiemccoy |
| Miranda McGuire | The Solutions Group | NM | http://institute.welcoa.org/profile/mirandamcguire |
| Elyse McKenna | Kaiser Permanente Healthworks | CA | http://institute.welcoa.org/profile/elysemckenna |

THE COMPLETE LIST OF WELCOA FACULTY

| NAME | ORGANIZATION | STATE | PROFILE |
|-----------------------|---|-------|---|
| Carly McKimm | Health Designs | FL | http://institute.welcoa.org/profile/carlymckimm |
| Tara McPherson | Lawley LLC | NY | http://institute.welcoa.org/profile/taramcpherson |
| Janet Melton | Grandview School District | MO | http://institute.welcoa.org/profile/janetmelton3 |
| Dana Miller | Kaiser Permanente Healthworks | CA | http://institute.welcoa.org/profile/danamiller2 |
| Erin Milliken | EPIC Brokers | CA | http://institute.welcoa.org/profile/erinmilliken |
| Jessica Moore | Blue Cross and Blue Shield of Vermont | VT | http://institute.welcoa.org/profile/jessicamoore |
| Benjamin Morris | Garrett County Public Schools and Garrett College | PA | http://institute.welcoa.org/profile/benjaminmorris |
| Alyssa Moss | Lawley LLC | NY | http://institute.welcoa.org/profile/alyssamoss |
| Rebecca Murphy | Valdosta State University | GA | http://institute.welcoa.org/profile/rebeccamurphy |
| Michelle Nguyen | Kaiser Permanente Healthworks | CA | http://institute.welcoa.org/profile/michellenguyen |
| Janet Nodorft | UnityPoint Health | WI | http://institute.welcoa.org/profile/janetnodorft |
| Stacey Noonan | Health Net | CA | http://institute.welcoa.org/profile/staceynoonan |
| Katie Northness | Des Moines Public Schools | IA | http://institute.welcoa.org/profile/katienorthness |
| Kari Norton | Utah County Government | UT | http://institute.welcoa.org/profile/karinorton |
| Jessica O'Connell | Aetna-FL | FL | http://institute.welcoa.org/profile/jessicaconnell2 |
| Lauren O'Dell | Kaiser Permanente Healthworks | OR | http://institute.welcoa.org/profile/laurenodell |
| Lee O'Donnell | Orlando Health | FL | http://institute.welcoa.org/profile/leeodonnell |
| Dorothy O'Guin | Gunster Yoakly & Stewart | FL | http://institute.welcoa.org/profile/gunster |
| Abby Ostendorf | McGriff Insurance Services Irvine | | http://institute.welcoa.org/profile/abbyostendorf |
| Nancy Palmer-Shevlin | Prodigy Medhealth | DE | http://institute.welcoa.org/profile/nancypalmershevlin |
| Penny Paul | City-County Health Department | MT | http://institute.welcoa.org/profile/pennypaul |
| Angie Perez | Broward County Benefits | FL | http://institute.welcoa.org/profile/angieperez |
| Tyler Perro | CG Coralisle | | http://institute.welcoa.org/profile/tylerperro |
| Stephane Phillips | Charlotte County Government/Crowne | FL | http://institute.welcoa.org/profile/stephanephillips |
| Melissa Phillips | Health Designs | FL | http://institute.welcoa.org/profile/melissaphillips |
| Diane Pierpont | Smith Brothers Insurance | CT | http://institute.welcoa.org/profile/dianepierpont |
| Darcy Pinon | McGriff Insurance Services Irvine | CA | http://institute.welcoa.org/profile/darcypinon |
| Christine Pongratz | Advocate Aurora Health Care | WI | http://institute.welcoa.org/profile/christinepongatz |
| Phyllis Putman-Cotter | Huntsville Hospital | AL | http://institute.welcoa.org/profile/phyllisputmancotter |
| Sarah Ray | Walsh Duffield | NY | http://institute.welcoa.org/profile/sarahray |
| Vanessa Reinoso | Marsh & McLennan Agency LLC | CA | http://institute.welcoa.org/profile/vanessareinoso |
| Danielle Reyes | EPIC Brokers | CA | http://institute.welcoa.org/profile/daniellereyes |
| Karyn Richmond | School District of Sun Prairie Area | WI | http://institute.welcoa.org/profile/karynrichmond |
| Becca Rick | GBS Benefits | UT | http://institute.welcoa.org/profile/beccarick |

THE COMPLETE LIST OF WELCOA FACULTY

| NAME | ORGANIZATION | STATE | PROFILE |
|----------------------|---|-------|---|
| Amy Rising | McGriff Insurance Services Irvine | CA | http://institute.welcoa.org/profile/amyrising |
| Sarah Rodgerson | Dean Health Plan | WI | http://institute.welcoa.org/profile/sarahrodgerson |
| Julie Roeder | City of Evans | CO | http://institute.welcoa.org/profile/julieroeder |
| Jill Roesler | The Insurance Center | WI | http://institute.welcoa.org/profile/jillroesler |
| Chip Ross | Syngenta | NC | http://institute.welcoa.org/profile/chipross |
| Traci Rothenburger | Nordic Group of Companies/ Flambeau, Inc | WI | http://institute.welcoa.org/profile/tracirothenburger |
| Jenna Rudolph | The Partners Group | OR | http://institute.welcoa.org/profile/jennarudolph |
| AMBER RUST | | ID | http://institute.welcoa.org/profile/amberrust |
| Marc Saenz | Kaiser Permanente Healthworks | CA | http://institute.welcoa.org/profile/marcsaenz |
| Arianna Salas | Kaiser Permanente Healthworks | CA | http://institute.welcoa.org/profile/ariannasalas |
| Joan Salemme | Kaiser Permanente Healthworks | CA | http://institute.welcoa.org/profile/joansalemme |
| Allison Schultz | Kaiser Permanente Healthworks | CA | http://institute.welcoa.org/profile/allisonschultz |
| Kacie Schumann | City of Ames | IA | http://institute.welcoa.org/profile/kacieschumann |
| Lauren Scull | City of Doral | FL | http://institute.welcoa.org/profile/laurensnull |
| Jessica Seniuk | Aetna - MidAtlantic National Accounts | PA | http://institute.welcoa.org/profile/jessicaseniuk |
| Terry Shaffer | Emerson Automation Solutions | IA | http://institute.welcoa.org/profile/epm |
| Heather Sittler | Hylant | IN | http://institute.welcoa.org/profile/heathersittler |
| Nichelle Slavens | Tulsa City-County Health Department | OK | http://institute.welcoa.org/profile/nichelleslavens |
| Joann Sparks | Deseret Mutual Benefit Administrators | UT | http://institute.welcoa.org/profile/joannsparks |
| Amanda Stray | Mutual of Enumclaw Insurance Company | WA | http://institute.welcoa.org/profile/amandastray |
| Preeti Sugathan | Kaiser Permanente Healthworks | OR | http://institute.welcoa.org/profile/preetisugathan |
| Jennifer Sundling | Phoenix Union High School District | AZ | http://institute.welcoa.org/profile/jennifersundling |
| Danielle Tavenner | Dean Health Plan | WI | http://institute.welcoa.org/profile/danielletavenner |
| Ann Teng | United Health Services, Inc | NY | http://institute.welcoa.org/profile/annteng |
| Julie Van Orden | Pioneer Natural Resources | TX | http://institute.welcoa.org/profile/julievanorden |
| Cindy Vice | Atrium Health Floyd | GA | http://institute.welcoa.org/profile/cindyvice |
| Christy vonLinsowe | Pioneer State Mutual Insurance Company | MI | http://institute.welcoa.org/profile/pamemmendorfer |
| Gilana Vosberg | Associates In Family Medicine | CO | http://institute.welcoa.org/profile/gilanavosberg |
| Marian West | Insuramax | KY | http://institute.welcoa.org/profile/marianwest |
| Taryn West | MultiCare Health System | WA | http://institute.welcoa.org/profile/tarynwest |
| Janette Westman | Excellus BlueCross BlueShield | NY | http://institute.welcoa.org/profile/janettewestman |
| Julia Wilkins | Health New England | MA | http://institute.welcoa.org/profile/juliawilkins |
| Carrie Williams Howe | The UVM Foundation | VT | http://institute.welcoa.org/profile/carriewilliamshowe |
| Alyssa Wink | Samaritan Health Services, Inc. | OR | http://institute.welcoa.org/profile/alyssawink |

THE COMPLETE LIST OF WELCOA FACULTY

| NAME | ORGANIZATION | STATE | PROFILE |
|---------------------|--|-------|---|
| Jennifer Yakey-Ault | Disney | | http://institute.welcoa.org/profile/jenniferyakeyault |
| Audrey Yates | Springfield-Greene County Health Departm | MO | http://institute.welcoa.org/profile/audreyyates |
| Julie Yuhas | Lincoln Electric System | NE | http://institute.welcoa.org/profile/julieyuhas |
| Lauren Zahner | Washington University in St. Louis | MO | http://institute.welcoa.org/profile/laurenzahner |

 WELCOA[★]

P.O. BOX 540307 | OMAHA, NE 68154
402.827.3590 | WELCOA.ORG

