

20
24

THE WELLNESS COUNCIL OF AMERICA PRESENTS

THE WELCOA FACULTY

Updated February 2024

WELCOA*

ABOUT THE WELCOA FACULTY

OUT OF
5,000
TRAINED IN

THE WELCOA INSTITUTE
— FOR WELLNESS STUDIES —



174

**BEST TRAINED
CERTIFIED WELCOA
FACULTY**

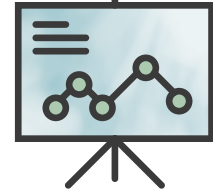
WHO
EARN



4

CERTIFICATIONS

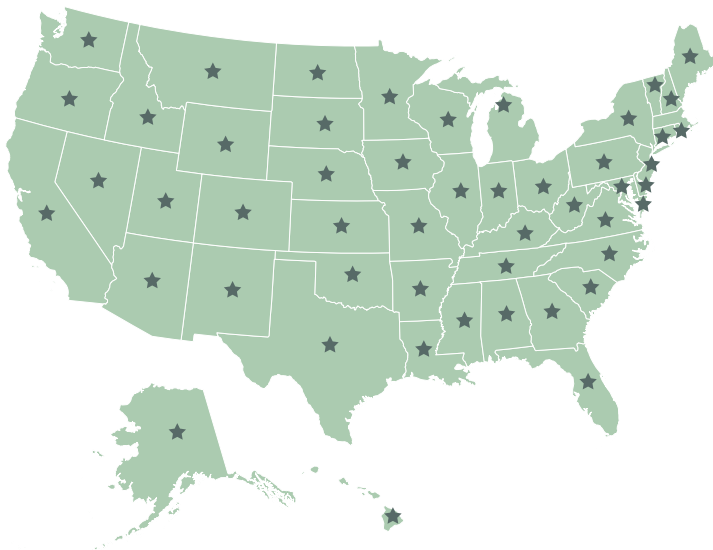
WHICH
RESULTS
IN



MORE
THAN **24**

**HOURS
OF TRAINING**

CERTIFIED WELCOA FACULTY LIVE IN...



50
STATES

AND

5
COUNTRIES

TRAINING CURRICULUM

- ✓ WELLNESS PROGRAM STRATEGY
- ✓ LATEST BEST PRACTICES FOR RESULTS-ORIENTED WELLNESS PROGRAMS
- ✓ PROGRAM EVALUATION
- ✓ MOTIVATION & BEHAVIORAL THEORY
- ✓ EMPLOYEE ENGAGEMENT
- ✓ LEADERSHIP AND PROGRAM MANAGEMENT SKILLS
- ✓ EMPLOYEE ENGAGEMENT
- ✓ MORE TOPICS ADDED MONTHLY

REQUIREMENTS



WELCOA CERTIFIED

Completion of one Certification Series (approximately 6 hours of online training).



WELCOA FACULTY CERTIFIED

Completion of four Certification Series. Faculty must complete at least one additional Certification every two years and be an active WELCOA Member in good standing to maintain Certified Faculty Status.

GET STARTED ON YOUR WELCOA FACULTY CERTIFICATION

Drawing from the latest science as well as best practices in the field, WELCOA offers dynamic and nationally recognized webinars and certification opportunities that engage workplace wellness practitioners, business leaders and health professionals all across the country.

LEARN MORE
institute.welcoa.org



THE COMPLETE LIST OF WELCOA FACULTY

NAME	ORGANIZATION	STATE	PROFILE
Toni Armbruster	Husch Blackwell LLP	MO	http://institute.welcoa.org/profile/toniarmbruster
Jennifer Artman	HealthSource Solutions	IL	http://institute.welcoa.org/profile/jenniferartman
Katie Atkinson	Security National Life Insurance Company		http://institute.welcoa.org/profile/katieatkinson
Meredith Baciak	Miron Construction Co., Inc	WI	http://institute.welcoa.org/profile/meredithbaciak
Kim Baker	Northern Kentucky University	KY	http://institute.welcoa.org/profile/kimbaker
Kelii Bandmann	UHA	HI	http://institute.welcoa.org/profile/keliibandmann
Sheila Bannister	Independent Contractor	RI	http://institute.welcoa.org/profile/sheilabannister
Jennifer Barroll	Kaiser Permanente Healthworks	CA	http://institute.welcoa.org/profile/jenniferbarroll
Rachel Beck	Arapahoe County	CO	http://institute.welcoa.org/profile/rachelbeck2
Jenni Beekman	Dean Health Plan	WI	http://institute.welcoa.org/profile/jennibeekman
Maddison Bezdicek	Captive Resources, LLC	IL	http://institute.welcoa.org/profile/maddisonbezdicek
Bonnie Bishop	Samaritan Health Services	OR	http://institute.welcoa.org/profile/bonniebishop
Jennessa Bissonnette	CGI Business Solutions	NH	http://institute.welcoa.org/profile/jennessab
Maricel Blackwell	HMSA	HI	http://institute.welcoa.org/profile/maricelblackwell2
Melissa Blanco	Kaiser Permanente Healthworks	CA	http://institute.welcoa.org/profile/melissablanco
McKenzi Blanton	McGriff Insurance Services Irvine	CA	http://institute.welcoa.org/profile/mkenziblanton
Kelley Bock	Froedtert Health Inc	WI	http://institute.welcoa.org/profile/kelleybock
Chrissy Boe	Network Health	WI	http://institute.welcoa.org/profile/christineboe
Christy Brooks	Kaiser Permanente Healthworks	MD	http://institute.welcoa.org/profile/christybrooks
Bethany Bullard	Johnson Kendall Johnson	PA	http://institute.welcoa.org/profile/bethanybullard
Angela Cameranesi	Froedtert Health Inc	WI	http://institute.welcoa.org/profile/angelacameranesi
Natalie Cannady	UAMS LR	AR	http://institute.welcoa.org/profile/nataliecannady
Nikki Capelle	Woodman's Food Market, Inc.	WI	http://institute.welcoa.org/profile/nikkicapelle
Marti Carl	McGriff Insurance Services Irvine	CA	http://institute.welcoa.org/profile/marticar1
Michele Carpenter	Kaiser Permanente Healthworks	CA	http://institute.welcoa.org/profile/michelecarpenter
Sandi Carter	Ertel & Company, Inc.	IN	http://institute.welcoa.org/profile/sandicarter
Nicole Carter	Kaiser Permanente Healthworks	CA	http://institute.welcoa.org/profile/nicolecarter
Jennifer Castillo	Kaiser Permanente Healthworks	CA	http://institute.welcoa.org/profile/jennifercastillo
Michelle Cella	Marcum LLP	NY	http://institute.welcoa.org/profile/michellecella
Kathy Chambers	Dean Health Plan	WI	http://institute.welcoa.org/profile/kathychambers
Robert Chapman	HealthSource Solutions	MN	http://institute.welcoa.org/profile/robertchapman
Stephanie Conner	CBIZ Benefits and Insurance Services	MO	http://institute.welcoa.org/profile/stephanieconner
Adam Cox	McGriff Insurance Services Irvine	CA	http://institute.welcoa.org/profile/adamcox
Carrie Crowe	BKS Partners	TN	http://institute.welcoa.org/profile/carriecrowe

THE COMPLETE LIST OF WELCOA FACULTY

NAME	ORGANIZATION	STATE	PROFILE
Anne Curtis	Aurora Health Care	WI	http://institute.welcoa.org/profile/annecurtis
Amanda Davis		AL	http://institute.welcoa.org/profile/amandadavis2
Valerie Davison	UHA	HI	http://institute.welcoa.org/profile/valeriedavison
Kristina Docwra		TX	http://institute.welcoa.org/profile/kristinadocwra2
Jessica Domann	Phillips 66	TX	http://institute.welcoa.org/profile/jessicadomann
Lisa Drzyzga	Univera Healthcare	NY	http://institute.welcoa.org/profile/lisadrzyzga
Linda Duffy	Broward County Benefits	FL	http://institute.welcoa.org/profile/lindaduffy
Jenny Edwards	Government Employees Health Association, Inc.	KS	http://institute.welcoa.org/profile/jedunn
Carly Fassbender	Froedtert Health Inc	WI	http://institute.welcoa.org/profile/carlyfassbender
Crystal Felten	Metropolitan Council	MN	http://institute.welcoa.org/profile/crystalfelten
Stacey Fickau	Froedtert Health Inc	WI	http://institute.welcoa.org/profile/staceyfickau
Megan Fortnoff		OH	http://institute.welcoa.org/profile/meganfortnoff
Jaqueline Fuccillo	Premise Health	NJ	http://institute.welcoa.org/profile/jaquelinefuccillo2
Tracy Gallo	BCBSFL	FL	http://institute.welcoa.org/profile/tracygallo3
Jesse Gavin	JG Key Services, LLC	TX	http://institute.welcoa.org/profile/jessegavin
Elle Gbesemete	EPIC Brokers	CA	http://institute.welcoa.org/profile/ellegbesemete
Brandee Gerow	SAIF	OR	http://institute.welcoa.org/profile/brandeegerow
Jody Gilmyers	CISAA Insurance Group	CA	http://institute.welcoa.org/profile/jodygilmyers
Jana Goolsby	City of Olathe	KS	http://institute.welcoa.org/profile/janagoolsby
Mary Green	Woodruff Sawyer & Co	OR	http://institute.welcoa.org/profile/marygreen
Sharon Griffin	The Solutions Group	AZ	http://institute.welcoa.org/profile/sharongriffin
Vicki Griffis Roy	Hylant	FL	http://institute.welcoa.org/profile/vickigriffisroy
Kalen Gruber	McGriff Insurance Services Irvine	CA	http://institute.welcoa.org/profile/kalengruber
Kathy Grywusiewicz	City Of Odessa	TX	http://institute.welcoa.org/profile/kathygrywusiewicz
Tracie Guild	Red Stone Equity Partners	MI	http://institute.welcoa.org/profile/tracieguild
Chantal Gutierrez	Kaiser Permanente Healthworks	MD	http://institute.welcoa.org/profile/chantalgutierrez
Martha Hagmaier	Electronic Arts	CA	http://institute.welcoa.org/profile/marthahagmaier
Sharon Hailey	City of Germantown	TN	http://institute.welcoa.org/profile/sharonhailey
Armand Hamberlin	CHC Wellbeing	IL	http://institute.welcoa.org/profile/armandhamberlin
Dawn Hedlund	LifeCare Medical Center	MN	http://institute.welcoa.org/profile/dawnhedlund
Heidi Helsley	Washington State Health Care Authority	WA	http://institute.welcoa.org/profile/heidihelsley
Kara Hepp		MO	http://institute.welcoa.org/profile/karahepp2
Jane Herbert	The Solutions Group	NM	http://institute.welcoa.org/profile/janeherbert
Kelly Herrin		WI	http://institute.welcoa.org/profile/kellyherrin

THE COMPLETE LIST OF WELCOA FACULTY

NAME	ORGANIZATION	STATE	PROFILE
Aaron Huff	Washington State Health Care Authority	WA	http://institute.welcoa.org/profile/aaronhuff
Heather Hughes	Premise Health	TN	http://institute.welcoa.org/profile/heatherhughes
Michele Hunnicutt	Harris Health System	TX	http://institute.welcoa.org/profile/michelehunnicutt
Daniela Imbimbo	City Furniture	FL	http://institute.welcoa.org/profile/danielaimbimbo
Taylor Ingersoll	Johnston County Human Resources	NC	http://institute.welcoa.org/profile/tayloringersoll
Trish Isaak	Davidson Benefits Planning	OR	http://institute.welcoa.org/profile/trishisaak
Brianne Jackson	Kaiser Permanente Healthworks	CA	http://institute.welcoa.org/profile/briannejackson2
Tia Jeppsen	Samaritan Health Services, Inc.	OR	http://institute.welcoa.org/profile/tiajeppsen
Raeanna Johnson	Weber State University	UT	http://institute.welcoa.org/profile/raeannajohnson
Stephanie Jones	Arkansas Blue Cross and Blue Shield	AR	http://institute.welcoa.org/profile/stephaniejones2
Robert Julius	Perryman Company	PA	http://institute.welcoa.org/profile/robertjulius
Laurell Kaiser	Skills Inc.	WA	http://institute.welcoa.org/profile/laurellkaiser
Kelle Kampa	Kelsey Seybold	TX	http://institute.welcoa.org/profile/kellekampa2
Lauren Kanikeberg	Trimble	OR	http://institute.welcoa.org/profile/laurenkanikeberg
Carly Kleiman	Hylant	FL	http://institute.welcoa.org/profile/carlykleiman
Emily Kral	Hylant	OH	http://institute.welcoa.org/profile/emilykrall
Alyssa Kwasny	Faith Technologies, Inc.	WI	http://institute.welcoa.org/profile/alyssakwasny
Edwina Larson	Goodwill Industries of Southeastern Wisconsin Inc	WI	http://institute.welcoa.org/profile/edwinalarson
Francy Leal	North East ISD	TX	http://institute.welcoa.org/profile/francyleal2
Charlene Learner	Huntsville Hospital	AL	http://institute.welcoa.org/profile/charlenelearner
Kim Lepera	Husch Blackwell	WI	http://institute.welcoa.org/profile/kimlepera
Carol Li	Kaiser Permanente Healthworks	CA	http://institute.welcoa.org/profile/carolli
Kristen Lippencott	Arkansas Blue Cross and Blue Shield	AR	http://institute.welcoa.org/profile/kristenlippencott
Kayla Livesay	State of Tennessee - Department of Finance & Admin	TN	http://institute.welcoa.org/profile/kaylalivesay
Sharon Looney			http://institute.welcoa.org/profile/sharonlooney
Adriana Lopez	The Solutions Group	AZ	http://institute.welcoa.org/profile/adrianalopez
Ruth LoRegio	Aetna - MidAtlantic National Accounts	PA	http://institute.welcoa.org/profile/ruthloregio
Carolyn MacVicar	University of Alabama - Wellness and Work-Life	AL	http://institute.welcoa.org/profile/carolynmacvicar
Jen Marberry	The Solutions Group	NM	http://institute.welcoa.org/profile/jenmarberry
Melissa Marion	High Point University	NC	http://institute.welcoa.org/profile/melissamarion
Christine Maurer	StoneX	MO	http://institute.welcoa.org/profile/christinemaurer
Tammie McCoy	CBIZ Benefits and Insurance Services	KS	http://institute.welcoa.org/profile/tammiemccoy
Miranda McGuire	The Solutions Group	NM	http://institute.welcoa.org/profile/mirandamcguire
Elyse McKenna	Kaiser Permanente Healthworks	CA	http://institute.welcoa.org/profile/elysemckenna

THE COMPLETE LIST OF WELCOA FACULTY

NAME	ORGANIZATION	STATE	PROFILE
Carly McKimm	Health Designs	FL	http://institute.welcoa.org/profile/carlymckimm
Tara McPherson	Lawley LLC	NY	http://institute.welcoa.org/profile/taramcpherson
Janet Melton	Grandview School District	MO	http://institute.welcoa.org/profile/janetmelton3
Dana Miller	Kaiser Permanente Healthworks	CA	http://institute.welcoa.org/profile/danamiller2
Erin Milliken	EPIC Brokers	CA	http://institute.welcoa.org/profile/erinmilliken
Jessica Moore	Blue Cross and Blue Shield of Vermont	VT	http://institute.welcoa.org/profile/jessicamoore
Benjamin Morris	Garrett County Public Schools and Garrett College	PA	http://institute.welcoa.org/profile/benjaminmorris
Alyssa Moss	Lawley LLC	NY	http://institute.welcoa.org/profile/alyssamoss
Rebecca Murphy	Valdosta State University	GA	http://institute.welcoa.org/profile/rebeccamurphy
Michelle Nguyen	Kaiser Permanente Healthworks	CA	http://institute.welcoa.org/profile/michellenguyen
Janet Nodorft	UnityPoint Health	WI	http://institute.welcoa.org/profile/janetnodorft
Stacey Noonan	Health Net	CA	http://institute.welcoa.org/profile/staceynoonan
Katie Northness	Des Moines Public Schools	IA	http://institute.welcoa.org/profile/katienorthness
Kari Norton	Utah County Government	UT	http://institute.welcoa.org/profile/karinorton
Jessica O'Connell	Aetna-FL	FL	http://institute.welcoa.org/profile/jessicaconnell2
Lauren O'Dell	Kaiser Permanente Healthworks	OR	http://institute.welcoa.org/profile/laurenodell
Lee O'Donnell	Orlando Health	FL	http://institute.welcoa.org/profile/leeodonnell
Dorothy O'Guin	Gunster Yoakly & Stewart	FL	http://institute.welcoa.org/profile/gunster
Abby Ostendorf	McGriff Insurance Services Irvine		http://institute.welcoa.org/profile/abbyostendorf
Nancy Palmer-Shevlin	Prodigy Medhealth	DE	http://institute.welcoa.org/profile/nancypalmershevlin
Penny Paul	City-County Health Department	MT	http://institute.welcoa.org/profile/pennypaul
Angie Perez	Broward County Benefits	FL	http://institute.welcoa.org/profile/angieperez
Tyler Perro	CG Coralisle		http://institute.welcoa.org/profile/tylerperro
Stephane Phillips	Charlotte County Government/Crowne	FL	http://institute.welcoa.org/profile/stephanephillips
Melissa Phillips	Health Designs	FL	http://institute.welcoa.org/profile/melissaphillips
Diane Pierpont	Smith Brothers Insurance	CT	http://institute.welcoa.org/profile/dianepierpont
Darcy Pinon	McGriff Insurance Services Irvine	CA	http://institute.welcoa.org/profile/darcypinon
Christine Pongratz	Advocate Aurora Health Care	WI	http://institute.welcoa.org/profile/christinepongatz
Phyllis Putman-Cotter	Huntsville Hospital	AL	http://institute.welcoa.org/profile/phyllisputmancotter
Sarah Ray	Walsh Duffield	NY	http://institute.welcoa.org/profile/sarahray
Vanessa Reinoso	Marsh & McLennan Agency LLC	CA	http://institute.welcoa.org/profile/vanessareinoso
Danielle Reyes	EPIC Brokers	CA	http://institute.welcoa.org/profile/daniellereyes
Karyn Richmond	School District of Sun Prairie Area	WI	http://institute.welcoa.org/profile/karynrichmond
Becca Rick	GBS Benefits	UT	http://institute.welcoa.org/profile/beccarick

THE COMPLETE LIST OF WELCOA FACULTY

NAME	ORGANIZATION	STATE	PROFILE
Amy Rising	McGriff Insurance Services Irvine	CA	http://institute.welcoa.org/profile/amyrising
Sarah Rodgerson	Dean Health Plan	WI	http://institute.welcoa.org/profile/sarahrodgerson
Julie Roeder	City of Evans	CO	http://institute.welcoa.org/profile/julieroeder
Jill Roesler	The Insurance Center	WI	http://institute.welcoa.org/profile/jillroesler
Chip Ross	Syngenta	NC	http://institute.welcoa.org/profile/chipross
Traci Rothenburger	Nordic Group of Companies/ Flambeau, Inc	WI	http://institute.welcoa.org/profile/tracirothenburger
Jenna Rudolph	The Partners Group	OR	http://institute.welcoa.org/profile/jennarudolph
AMBER RUST		ID	http://institute.welcoa.org/profile/amberrust
Marc Saenz	Kaiser Permanente Healthworks	CA	http://institute.welcoa.org/profile/marcsaenz
Arianna Salas	Kaiser Permanente Healthworks	CA	http://institute.welcoa.org/profile/ariannasalas
Joan Salemme	Kaiser Permanente Healthworks	CA	http://institute.welcoa.org/profile/joansalemme
Allison Schultz	Kaiser Permanente Healthworks	CA	http://institute.welcoa.org/profile/allisonschultz
Kacie Schumann	City of Ames	IA	http://institute.welcoa.org/profile/kacieschumann
Lauren Scull	City of Doral	FL	http://institute.welcoa.org/profile/laurensnull
Jessica Seniuk	Aetna - MidAtlantic National Accounts	PA	http://institute.welcoa.org/profile/jessicaseniuk
Terry Shaffer	Emerson Automation Solutions	IA	http://institute.welcoa.org/profile/epm
Heather Sittler	Hylant	IN	http://institute.welcoa.org/profile/heathersittler
Nichelle Slavens	Tulsa City-County Health Department	OK	http://institute.welcoa.org/profile/nichelleslavens
Joann Sparks	Deseret Mutual Benefit Administrators	UT	http://institute.welcoa.org/profile/joannsparks
Amanda Stray	Mutual of Enumclaw Insurance Company	WA	http://institute.welcoa.org/profile/amandastray
Preeti Sugathan	Kaiser Permanente Healthworks	OR	http://institute.welcoa.org/profile/preetisugathan
Jennifer Sundling	Phoenix Union High School District	AZ	http://institute.welcoa.org/profile/jennifersundling
Danielle Tavenner	Dean Health Plan	WI	http://institute.welcoa.org/profile/danielletavenner
Ann Teng	United Health Services, Inc	NY	http://institute.welcoa.org/profile/annteng
Julie Van Orden	Pioneer Natural Resources	TX	http://institute.welcoa.org/profile/julievanorden
Cindy Vice	Atrium Health Floyd	GA	http://institute.welcoa.org/profile/cindyvice
Christy vonLinsowe	Pioneer State Mutual Insurance Company	MI	http://institute.welcoa.org/profile/pamemmendorfer
Gilana Vosberg	Associates In Family Medicine	CO	http://institute.welcoa.org/profile/gilanavosberg
Marian West	Insuramax	KY	http://institute.welcoa.org/profile/marianwest
Taryn West	MultiCare Health System	WA	http://institute.welcoa.org/profile/tarynwest
Janette Westman	Excellus BlueCross BlueShield	NY	http://institute.welcoa.org/profile/janettewestman
Julia Wilkins	Health New England	MA	http://institute.welcoa.org/profile/juliawilkins
Carrie Williams Howe	The UVM Foundation	VT	http://institute.welcoa.org/profile/carriewilliamshowe
Alyssa Wink	Samaritan Health Services, Inc.	OR	http://institute.welcoa.org/profile/alyssawink

THE COMPLETE LIST OF WELCOA FACULTY

NAME	ORGANIZATION	STATE	PROFILE
Jennifer Yakey-Ault	Disney		http://institute.welcoa.org/profile/jenniferyakeyault
Audrey Yates	Springfield-Greene County Health Departm	MO	http://institute.welcoa.org/profile/audreyyates
Julie Yuhas	Lincoln Electric System	NE	http://institute.welcoa.org/profile/julieyuhas
Lauren Zahner	Washington University in St. Louis	MO	http://institute.welcoa.org/profile/laurenzahner



18700 West Bluemound Road | Brookfield, WI 53045
402.827.3590 | WELCOA.ORG

